

Project By:-



Developed By :-



Corporate Office Address: 106 La, Rameshwar Bhawan, Main Road,
Saraidhela, Dhanbad, Jharkhand (828127).
Ph. No. 0326-2222277 Fax: 0326-2222177. Tollfree No. 1800-1234-676
www.suryarealcon.com

Architects
Ar. Kushjee Pandey

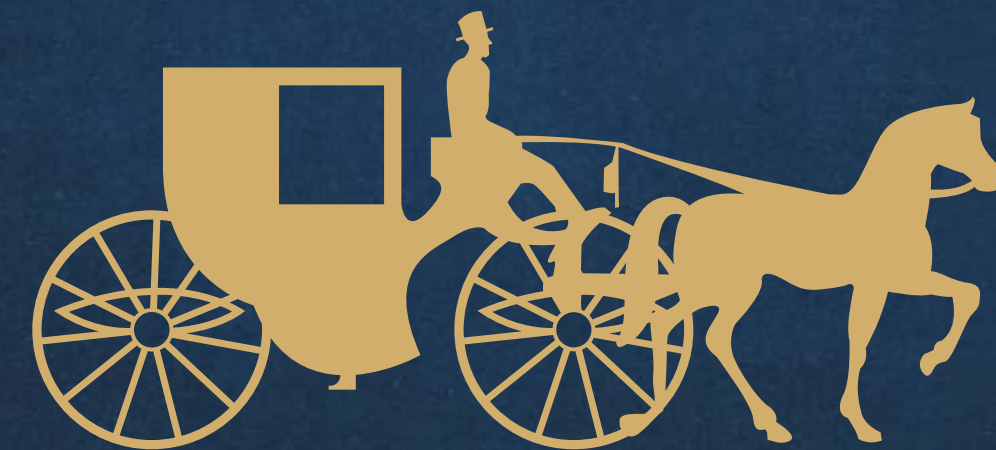
3bhikalpa
design studio

Triveni Orion, 2nd floor, Near Golbuilding, Dhanbad
9643660451

This brochure is purely a conceptual presentation and not a legal offering. The promoters reserve the right to alter or make any changes in the elevation, plans and specifications as deemed fit, elevation mentioned herein. All units are unfurnished. Furniture wherever shown is for illustrative purpose only. No furniture is to be supplied to the purchaser by the developer unless otherwise mentioned. All images, unless otherwise indicated are used for illustrative purpose only.

Surya Shridham Aangan

One Address endless destinations to live the high life...



DESIGN & PRINT BY : MADDY, 7903171497



THOUGHTFULLY CREATED LIVING SPACES!

Majastic living spaces coupled with spellbinding vistas that spread across the campus, An amazing sight to behold and ever-longing feeling of comfort and luxury revel in the blissful perfection...At Surya Shridham Aangan

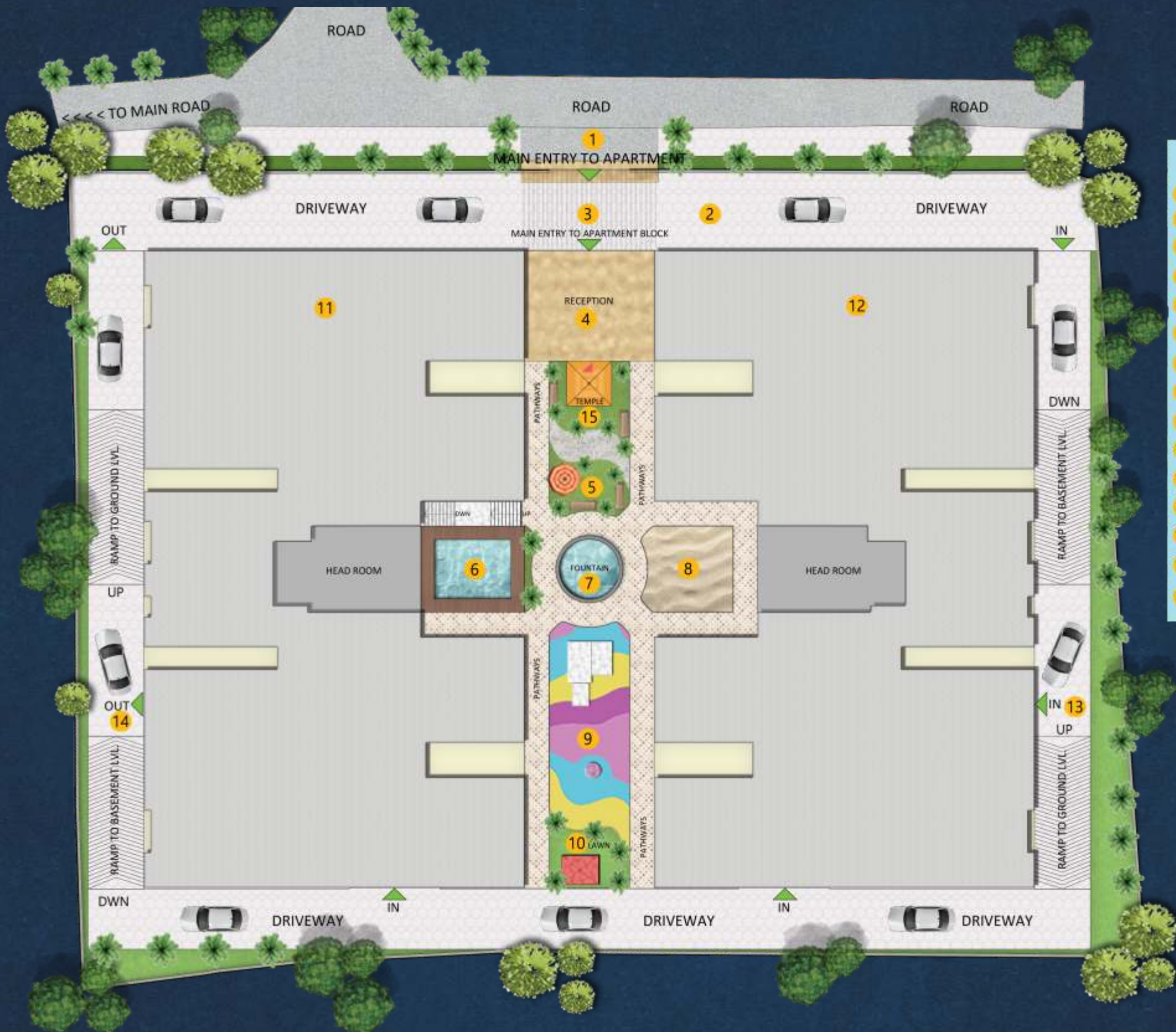


Surya Shridham Aangan

True to its name "Surya Shridham Aangan" offers sheer splendor and an opulent living for its proud owners. Offering premium residential spaces - Luxury Apartments with a host of lifestyle amenities, a classy finish and an overall luxurious campus. Come revel in the grandeur of one of our most ambitious and premium projects till date.



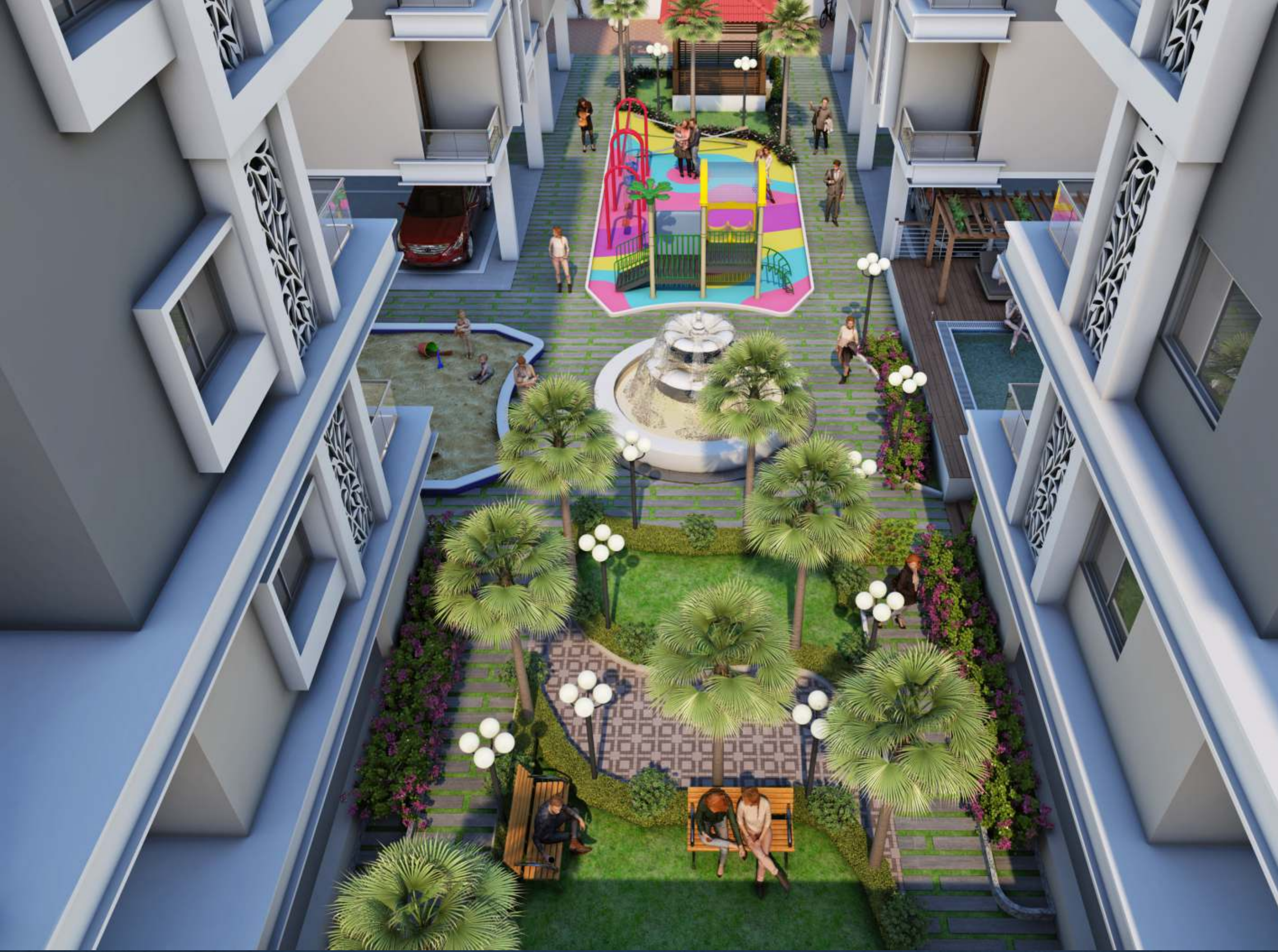
LAYOUT PLAN



- LEGEND**
- 1 MAIN ENTRY
 - 2 DRIVEWAY
 - 3 FOYER
 - 4 RECEPTION
 - 5 OUTDOOR SITTING
 - 6 SWIMMING POOL
 - 7 FOUNTAIN
 - 8 SAND PIT
 - 9 KIDS PLAY AREA
 - 10 GAZEBO
 - 11 BLOCK A
 - 12 BLOCK B
 - 13 BASEMENT ENTRY
 - 14 BASEMENT EXIT
 - 15 TEMPLE



The campus is arranged in a unique layout allowing ample privacy to the apartment. Allowing a liberal view of the green and ample nature aeration and sunlight. In keeping with the boutique style the exteriors are treated differently, creating a campus of unique texture, structure, elevation...and most importantly, unique lifestyle.



Gazebo



Banquet Hall



Indoor Games



Swimming Pool



Gymnasium



Children Play Area



Temple



Landscape Garden



Senior citizen sitout



24 Hours Water Supply



Lavish Entrance Gate



Waiting Lounge



Fountain



Sand Pit



CCTV Surveillance



Automatic Elevators



Parking Space



24 Hours Security



Generator Backup



Fire Safety



Solar Powered





Swimming Pool



Waiting Lounge



Banquet Hall



Gymnasium





Swimming Pool



Dive into these crystal blue waves and watch the rivulets of joy glisten in the light. This refreshing new style of relaxing is bound to leave you feeling ecstatic for more.



"An ideal home is the blend of connectivity,
Quality and Healthy Community"



Your dream, Our effort.





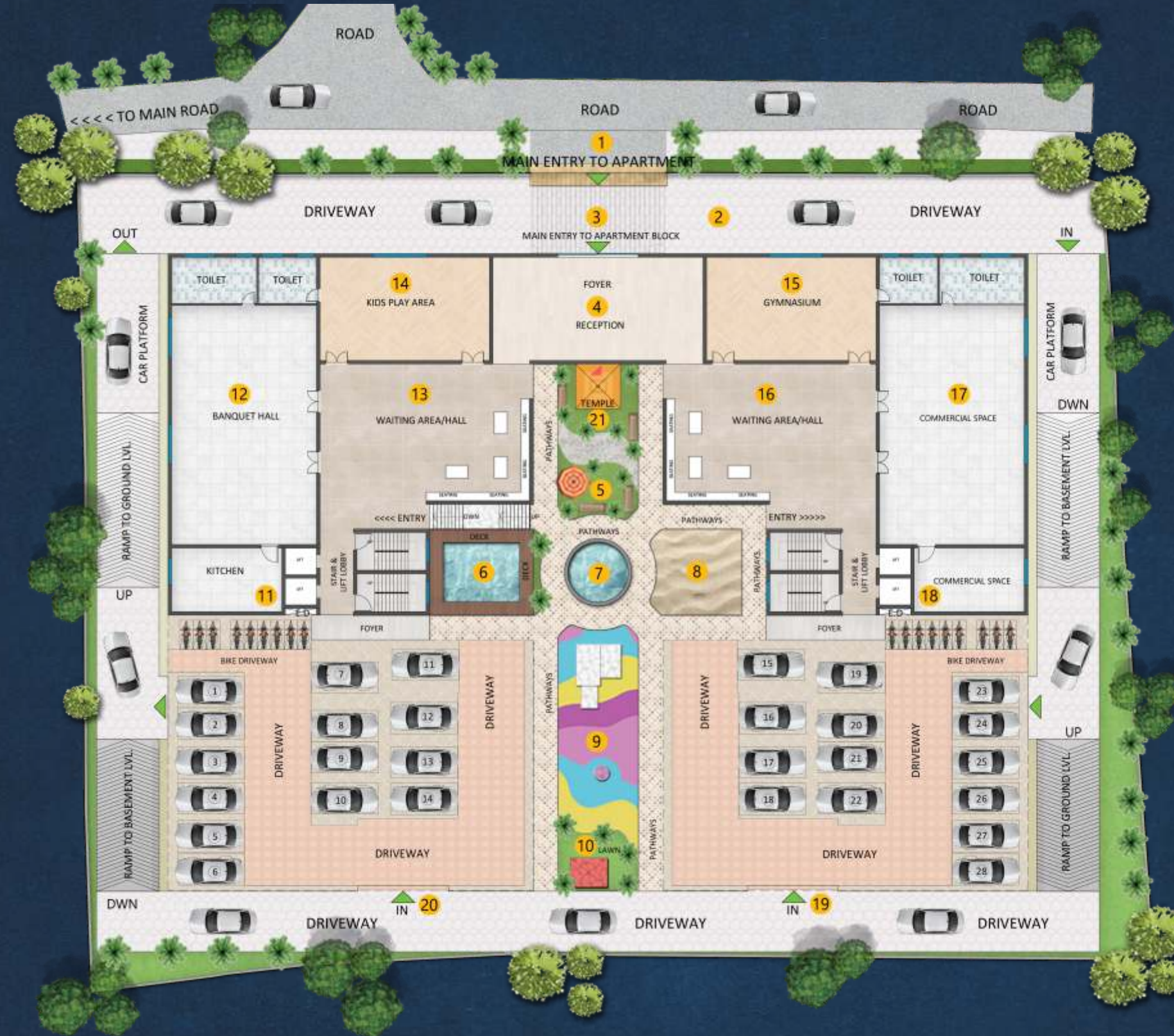
EXPERIENCE
THE EXCLUSIVITY IN
COMMUNITY LIVING



LOWER BASEMENT PLAN



UPPER BASEMENT PLAN



- LEGEND**
- 1 MAIN ENTRY
 - 2 DRIVEWAY
 - 3 FOYER
 - 4 RECEPTION
 - 5 OUTDOOR SITTING
 - 6 SWIMMING POOL
 - 7 FOUNTAIN
 - 8 SAND PIT
 - 9 KIDS PLAY AREA
 - 10 GAZEBO
 - 11 KITCHEN
 - 12 BANQUET HALL
 - 13 WAITING AREA
 - 14 KIDS PLAY AREA
 - 15 GYMNASIUM
 - 16 WAITING AREA
 - 17 COMMERCIAL SPACE
 - 18 COMMERCIAL SPACE
 - 19 CAR ENTRY
 - 20 CAR ENTRY
 - 21 TEMPLE



KEY PLAN



TYPICAL FLOOR PLAN



PENT HOUSE FLOOR

4 BHK FLAT

1st - 4th FLOOR



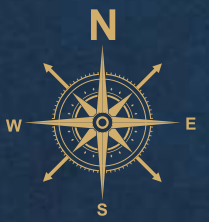
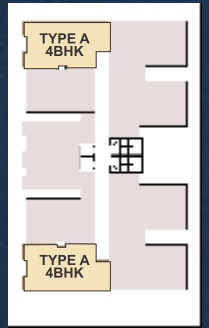
LOWER FLOOR PLAN



UPPER FLOOR PLAN

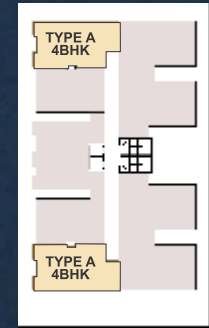


KEY PLAN

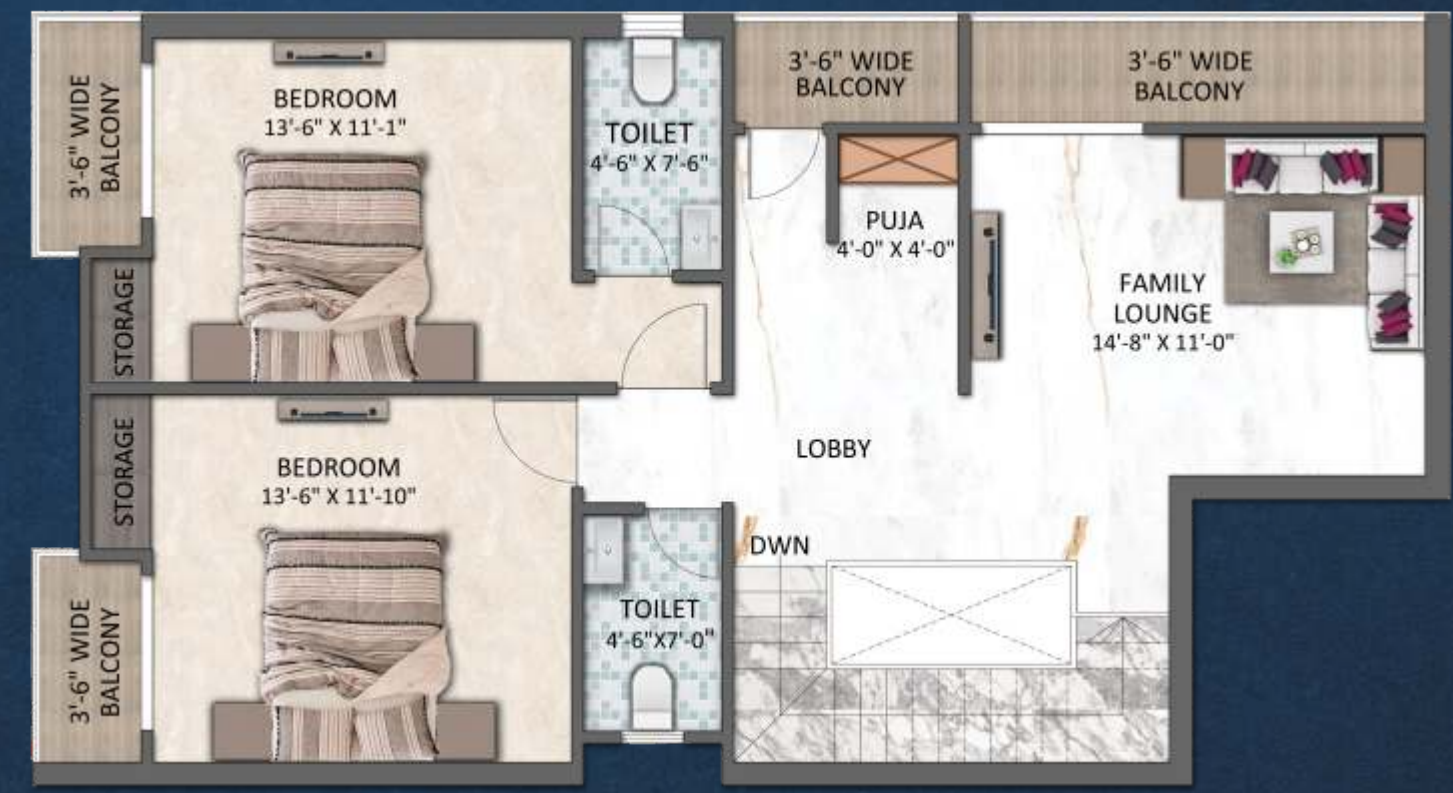


Type of Flat	Area
4 BHK Duplex	2350 sq.ft.

KEY PLAN



Type of Flat	Area
4 BHK Duplex	2350 sq.ft.



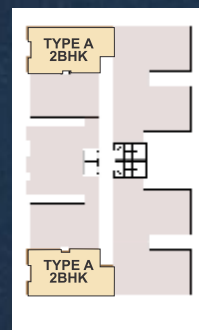
2 BHK FLAT
GROUND FLOOR



2 BHK FLAT
GROUND TO 4TH FLOOR



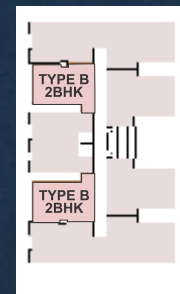
KEY PLAN



Type of Flat	Area
UNIT-A (2 BHK)	1225 sq.ft.



KEY PLAN



Type of Flat	Area
UNIT-B (2 BHK)	1130 sq.ft.





3 BHK FLAT
GROUND TO 4TH FLOOR



3 BHK FLAT
GROUND TO 4TH FLOOR



KEY PLAN



Type of Flat	Area
UNIT-C (3 BHK)	1400 sq.ft.



KEY PLAN



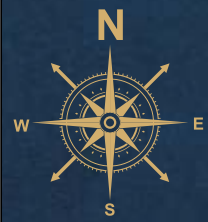
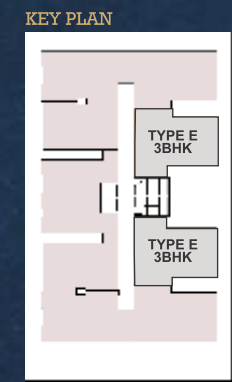
Type of Flat	Area
UNIT-D (3 BHK)	1260 sq.ft.





3 BHK FLAT GROUND TO 4TH FLOOR

Location Map (not to scale)



Type of Flat	Area
UNIT-E (3 BHK)	1340 sq.ft.

SPECIFICATION



STRUCTURE

- Earth-quake resistant, RCC framed structure

WALLS

- Internal : 115mm thick brick wall
- External : 230mm thick brick wall

DOORS & WINDOWS

- Main Door - Decorative Door & T.W. Frame (Imported)
- Inner Door - Flush door With Wooden Frame
- Toilet Door - Flush door With Wooden Frame
- Windows - Windows with UPVC frame and MS Safety grill



PLUMBING

- Internal branded concealed fittings and fixtures

ELECTRICAL

- All electrical wiring is concealed and of standard and modular switches
- Sufficient power outlet and light points provided
- A/C Point in Hall & Master Bed Room

KITCHEN

- Modular kitchen Platform with Black Granite Top with dado up to 4'
- Wash area

PAINTING

- External - Weather Protective Paint with 2 coat water proof Primer
- Internal - Wall putty with Primer

LIFT

- Lift with suitable capacity
- Passage Granite/Otta/Tiles

PARKING

- Ample car Parking

BATHROOM

- Anti skid Ceramic tiles
- Washbasin
- Branded fittings and premium sanitary ware
- Designer dado up to 7'
- Hot & Cold water connection

BED ROOM & LIVING

- Vitrified Tiles flooring in all room 750X750
- Cable TV connection in Hall



Note:- Stamp Duty & Registration fees | Electrical Meter charges, Transformer deposit, Water Meter & Connection Charges. Deposits & Expenses at actual to be paid extra in advance. G.S.T. or any such additional taxes will be charged extra. Changes in the specification & plan will cost extra. Possession of the flat will be given by the builder after clearance of all dues. Any Extra Work shall be charged separately before execution.